

End-to-End

The Parish Magazine of Rivenhall and Silver End



The Kestrel

This is fine specimen a frequent visitor to John Macrae's
Garden on the A12

April

2021

50p

The Following are services we hope to hold in April

4th April

9.30 am St Francis

11 am St Mary's

11th April

9.30 am St. Francis

11 am St Mary's

18th April

9.30 am St. Francis

11 am St Mary's

25th April

9.30 am St. Francis

11 am St Mary's

Easter Sunday

Private Prayer

Holy Communion

2nd Sunday of Easter

Private Prayer

Morning Prayer

3rd Sunday of Easter

Private Prayer

Morning Prayer

4th Sunday of Easter

Private Prayer

Holy Communion

Church Contacts

Team Vicar Rev. Paul Watkin

Churchwarden Ann Clarke

Churchwarden Peter Hope

Rivenhall Contact Carole McCarthy

Silver End Contact Ruth Aitken

Rivenhall Website

St Francis Silver End Website

Rivenhall Website

St Francis Silver End Website

01376 583930 psgw100@aol.com

01376 514825

01376 502605

01376 512781

01376 583846

www.stmarysrivenhall.co.uk

www.st-francis.org.uk/

www.stmarysrivenhall.co.uk

www.st-francis.org.uk/

Contact the Editor 07904 235101 or phope02@gmail.com

Reflections for Easter 2021

As we come into the period of Passiontide and Easter we reflect on Jesus's journey to the Cross and his eventual resurrection and ascension to the father at Pentecost.

In assessing the past Christian year it is difficult not to think on all those we have lost in our community over recent years and although thankfully Covid has not been a major contributor. We have had to say goodbye to many stalwarts of our community particularly most recently Pauline Marshall who was a cornerstone of our village and whose obituary you can find written by Mick in this issue of the magazine.

It is with great sadness that only last week Sarah and I had to say goodbye to our wonderful Springer Spaniel Charlie who has been a rock for us in the difficult year after Clare passed away. Charlie was not young (Nearly 16 at the end) but he was still young in spirit and just like the rhythm of life that the Church provides for us so our daily lives (Sarah and I) were marked by the routines that looking after Charlie entailed. Feeding and walking being a significant part but also giving (and receiving love) from this wonderful animal who possessed in him much of Clare's spirit.

He would always come at certain times of the day usually between 5 and 6 pm looking for a tummy rub and he would roll on his side and put his paw in the air waiting for someone to rub his tummy. Charlie was a rescue dog and came to us via our Son David who had rescued Charlie on the 22 May 2010. How do I know this? Well I have a photograph of Clare walking with her mobile phone to her ear talking to David. The conversation went a bit like this. Mum we've got a dog could you look after him in two weeks time when we go on holiday to I think it was Disney Florida for two weeks.

Now Clare had always said after we lost our last dog in 2001 (William he was old too and had had a lovely life) I am not having another dog I cannot bear the parting. Nevertheless when David began travelling more and more with his Job he found it impossible to look after Charlie. so in the spring of 2014 he came to live with us permanently in Essex and Clare loved having a new addition to the family as did I.

It reminds us that everybody in our community needs metaphorically speaking “a tummy rub”. By showing our love for each other through daily or weekly contact mostly in this time through a phone call or through the News Letter that Ann sends out weekly. We are able to maintain contact with the membership of the Church and the community.

All this reminds me of the outpouring of Love that Jesus received on Palm Sunday and then on Easter Sunday from his Mother and Mary Magdalene on discovering the Tomb was empty there was confusion and excitement when they discovered that Jesus who they loved may be alive after all.

It is with great joy that I was able to reopen the Church at St Mary's for socially distanced worship on Mothering Sunday and it is with great Joy that by the grace of God and the success of the Vaccination programme that we hope to continue to hold regular worship at 11 am every Sunday for the foreseeable future. Hopefully by June we will be able to dispense with our masks and sing together as of old!

We have now acquired a new member of the Church and this is Antony's new dog Rufus. He will be attending services with Antony in future. Rufus is a bit “ruff” (excuse the pun)

at the edges and we must all give him a little bit of slack. I'm told having never had a puppy that the first two years are the worst apparently dogs age very differently to humans. by the end of their first year they are the equivalent of a 15 year old human and by the end of their second year they are 24 and



fully adult there after they age about 5 to 6 years every year. On that basis Charlie was between 84 and 90 but he still went for his paddle in the Rivenhall Brook every day. Maybe it was this that kept him going a daily swim! Charlie loved the Pet service which of course we were unable to hold last year I couldn't resist this picture of Charlie waiting to be blessed by Rev. Paul and held by his daughter this was in 2018 the last time Clare was there!

Blessings to you all for Happy Easter and may you get all the Chocolate Eggs you want (but probably don't need!)

Peter Hope Church Warden

Readings and Collects for April 2021

4th April Easter Sunday

Readings

Acts 10:34-43

1 Corinthians 15:1-11

John 20: 1-18

Collect

Lord of all life and power,
who through the mighty resurrection of your Son
overcame the old order of sin and death
to make all things new in him:
grant that we, being dead to sin
and alive to you in Jesus Christ,
may reign with him in glory;
to whom with you and the Holy Spirit
be praise and honour, glory and might,
now and in all eternity..

11th April 2nd Sunday of Easter

Readings

Acts 4:32-35

1 John 1:1-2:2

John 20:19-31

Collect.

Risen Christ,
for whom no door is locked, no entrance barred:
open the doors of our hearts,

that we may seek the good of others
and walk the joyful road of sacrifice and peace,
to the praise of God the Father.

18th April 3rd Sunday of Easter

Readings

Acts 3:12-19

1 John 3:1-7

Luke 24:36b-48

Collect

Risen Christ,
you filled your disciples with boldness and fresh hope:
strengthen us to proclaim your risen life
and fill us with your peace,
to the glory of God the Father.

25th April 4th Sunday of Easter

Readings

Acts 4:5-12

1 John 3:16-24

John 10:11-18

Collect

Risen Christ,
faithful shepherd of your Father's sheep:
teach us to hear your voice
and to follow your command,
that all your people may be gathered into one flock,
to the glory of God the Father.

The 50/50 Club March 2020 winners

1st R Grenville 2nd B Barber 3rd A Clarke

RIVENHALL PARISH COUNCIL

NOTES OF MEETING HELD ON 2ND MARCH 2021

HELD ELECTRONICALLY DUE TO COVID-19 HEALTH RESTRICTIONS - all councillors took part via email.

These notes are an abridged version of the minutes.

Matters for Discussion

Annual Parish Assembly & Annual Parish Council Meeting

EALC has advised the Clerk that the APCM will be able to go ahead albeit electronically. Any advertising for the APA will have to include a caveat that it can only go ahead if legislation allows, at the moment it doesn't allow for gatherings until after 6th May 2021.

Annual Report

A draft is to be drawn up for approval at the April meeting.

To confirm the Trustees of The Henry Dixon Hall Charity

The following were confirmed as Trustees of The Henry Dixon Hall Charity:-

Robert Turner; Dennis Clark; Elizabeth Acharyya and Carole McCarthy.

Highway Maintenance

The loose drain cover outside Oak Barn, Oak Road has previously been reported to ECC Highways and the Chairman will remind ECC.

The Chairman expressed concern that a road closure for up to 4 days of Church Road was notified – to repair all the potholes on the submitted list in that road. Yet only one pothole appears to have been done out of 10. He has asked ECC as to what is going on with this and when the others in the parish that were listed within the "Top 50" some months ago are to be done. The deadline for completion is 31st March.

General Maintenance

The council notice boards will require repainting/repairs later in the Spring. The Clerk will arrange for a quotation to be presented at the April meeting.

Planning Applications

21/00349/COUPA: Prior approval for the change of use of agricultural buildings to a flexible use within Shops (Class A), Financial and Professional, at Appleford Farm, Braxted Road,

Rivenhall End.

The Parish Council has requested to BDC that this be made the subject of a full planning application.

21/00020/LBC: Replacement of 5 windows at Holly Cottage, 221 Oak Road. A 'No Comments' reply was returned to BDC.

Planning Results

The following planning applications have been granted by BDC:-

20/02059/HH: Extensions etc to Glebe Farm Cottage, Rectory Lane.

20/02032/HH: Extension to 5 Beech Road.

20/02113/HH: Extension etc to Park Gate Farm House, Park Road.

20/02130/HH: Extension to 4 Foxmead, Rivenhall End.

Planning Enforcement

ECC is in communication regarding boundary issues on land in Rickstones Road and linked to this BDC are also looking at planning enforcement in that same area.

Ongoing Planning Issues

A12 Widening

The next meeting will be a joint parish workshop for Little Braxted, Great Braxted, Rivenhall and Witham on Thursday 18th March using video conferencing. Highways England will be providing an update on the A12 widening project following the workshops late last year.

Braintree District Local Plan

BDC has now formally Adopted the Section 1 of the Local Plan and has written to the Planning Inspectorate to ask if the Section 2 Examination can be brought forward from the current timetable of a start in July.

In the meantime planning applications continue to be decided by BDC on the basis that the old Local Plan is out of date and on the basis that the council does not have a 5 year housing supply.

Rivenhall Airfield Waste Site

A site Liaison meeting was held on 26th February using video conferencing. The Chairman has subsequently written to ECC

about a number of planning matters that arose at the meeting including the clear statements by the developers that they intend to start building the plant, but with the only operating element being the waste incinerator until at least 2025.

Braintree Local Highways Panel

The next meeting will be held on 25th March.

Information exchange and items for the April agenda

- * ECC has confirmed that it is still looking at the boundaries for the RPC tree planting project on land off Rickstones Road but confirm RPC will be able to progress the planting (which will be next Autumn) once they have defined boundaries.
- * BDC reports that the new sections of path to the rear of the Village Hall are due to be installed commencing later this month. Letters have been sent to nearby properties to notify them.

Dates of future meetings

6th April and 4th May but both may be convened electronically.

If residents wish to raise any matters with the parish council, please contact the Clerk:

Telephone (01376) 516975

Email: parishclerk@rivenhallparishcouncil.net

The New A12 at Rivenhall

On receiving the following from James Abbott I punched the air and did a little Jig. If it is all true it is everything the Villagers of Rivenhall and Rivenhall End have been dreaming of for years. Roll on 2025! Please also note Simon Taylors comments about Wild Life we need to make sure the planners tsake on board the issue of planting.

Update on A12 widening and new road and access arrangements for Rivenhall End:

Following a series of meetings with Highways England where they have shared their preliminary thoughts, local councillors have been advised we can share some of the details - although just to reiterate these are not set in stone.

Highways England is currently aiming to hold a public consultation in June and the main elements as things stand are as follows:

The A12 (as previously known) will be moved south on a new alignment through the quarry and will be widened to 6 lanes. A new junction will completely replace the existing Witham north junction at Colemans Bridge. The new A12 will go through the quarry and then just to the south of the hotel and then rejoin the existing line of the A12 near the Fire HQ.

Rivenhall End will therefore be bypassed but a secondary road will also be built to take local traffic out of Rivenhall End and also relieve Oak Road. If this was not built then traffic such as HGVs going to the Commodity Centre and other commercial sites to the south would still turn off the "old" A12 into Oak Road at The Fox.

The new secondary road would be from the "old" A12 near the Fox almost in a straight line down to Braxted Road. There would also be a small link road to Henry Dixon Road just south of the hotel.

Oak Road would be stopped up near The Fox and become a cul-de-sac. Part of Braxted Road would also be stopped up - the new secondary road would join Braxted Road down near the lake.

The new arrangement would permanently remove all HGVs from Rivenhall End village apart from the ones that might use Henry Dixon Road going to/from Silver End - but they would have to be under 7.5T and under the height limit for the railway bridge.

We could look at further traffic calming measures on the local roads (which are ECC responsibility) once the plans are firmed up and also advance signage will be important to make sure it is clear to HGV drivers that they should use the new roads.

There will be a new pedestrian crossing of the detrunked "old" part of the A12 and new bus stops near to where the existing bus stops are located and a bit further north there would be a new footbridge to connect up the public rights of way.

Highways England also said that they still believe they are on track to start in late 2023 and for the first time they have said that their intention is to work on the bypass sections first - which would be Rivenhall End and the section north of Feering.

Although we were told we can share the above information we cannot share the maps - because they are not final plans yet and will have to go through a planning process. But at the consultation in June all the maps will be available.

Happy to answer any questions and appreciate it may not be easy to visualise all this from words alone.

Cllr James Abbott

Easter Biscuits



Ingredients

For the dough

- 200g/7oz softened butter, plus extra for greasing
- 150g/5½oz caster sugar
- 2 large free-range egg yolks
- 400g/14oz plain flour, plus extra for dusting
- 1 level tsp ground mixed spice
- 1 level tsp ground cinnamon
- 2-4 tbsp milk

For the currant biscuits add 100g/3½oz currants and caster sugar, for sprinkling

For the iced biscuits add 1–2 tsp lemon juice
250g/9oz icing sugar , food colourings

Method

1. Preheat the oven to 180C/160C Fan/Gas 4. Lightly grease two baking trays lined with baking paper.
2. Measure the butter and sugar into a bowl and beat together until light and fluffy. Beat in the egg yolk. Sieve in the flour and spices and add enough milk to make a fairly soft dough. Bring together, using your hands, to make a soft dough.
3. Halve the mixture and set half to one side.
4. For the traditional currant biscuits, add the currants to half of the mixture and knead lightly on a lightly floured work surface. Roll out to a thickness of about 5mm/¼in. Cut into rounds using a circular cutter. Place on the prepared baking trays. Sprinkle with caster sugar.
5. Bake in the preheated oven for 15 minutes, or until pale golden brown. Keep a careful eye on the biscuits – it doesn't matter if you open the oven door to check. Sprinkle with more caster sugar and lift onto a wire rack to cool. Store in an airtight container.
6. For the iced biscuits, knead the remaining half of the biscuit dough lightly on a lightly floured work surface. Roll out to a thickness of 5mm/¼in. Cut out Easter biscuits using an assortment of shaped cutters, such as bunnies, Easter eggs, chicks or spring flowers.
7. Lightly grease two baking trays lined with baking paper.
8. Place the biscuit shapes on the prepared baking trays and bake in the preheated oven for 10–15 minutes. Remove from the oven and lift onto a wire rack to cool.
9. To make the icing, pass one teaspoon of lemon juice through a fine sieve, to remove any pips or bits. Mix the icing sugar with the lemon juice and then add about two tablespoons of cold water, adding it little by little until you have a relatively stiff but smooth icing. Add a splash more sieved lemon juice if necessary.

10. Divide the icing into separate bowls and mix in food colourings of your choice into the separate bowls of icing, until you achieve the desired shade.
11. Spoon a little icing into a piping bag and pipe your decorations onto the biscuits. For a smooth finish, you can pipe the outline of your design in the firmer icing, then slacken it down a bit by mixing in a little more water, giving the icing more of a runny consistency, and use this to fill in the designs.

Sky Notes April 2021

April brings a rapid change to the skies as the lighter evenings expand with sunset extending to after 8pm BST by the end of the month. The Sun's arc across the sky climbs each day and given good weather it feels as if Spring has finally arrived.

Mars remains the lone bright planet on view in the evening sky, appearing as an 'extra star' in Taurus. The young Moon will be close by on the 17th.

Jupiter and Saturn are now pulling away from the Sun in the pre-dawn sky, but remain low down.

The Lyrid meteors peak on 22nd April. Although a shower of moderate activity, the Lyrids can produce occasional very bright meteors. The best time to watch is from late evening into the small hours, as the constellation of Lyra, led by the bright star Vega, rises in the North East. The gibbous Moon will interfere though, so that fainter meteors will not be seen.

The regular meteor showers such as the Lyrids are made up of dust left behind along the orbits of comets, which the Earth encounters at the same date each year in its orbit. Whilst the regular showers are fairly predictable, 'sporadic' meteors are random pieces of dust or sometimes larger objects which the Earth can encounter. On February 28th a very bright meteor was seen over the western side of the UK, widely recorded on CCTV and doorbell cameras. Part of this object survived the passage through the atmosphere to land as a meteorite. Several pieces were recovered for analysis – the first time

this has happened in the UK for 30 years.

The April Full Moon will be with us on the night of the 26th into the 27th and much lower in the sky than the recent winter Full Moons. This will be a so-called Super Moon – when the Moon does appear slightly larger than normal due to being near its closest point to Earth along its orbit. The Super Moon effect is best seen as the Moon rises – so on the 26th April soon after sunset and from a location overlooking a distant horizon such as a field.

So once again the mid-month period will be best for stargazing. In clear late evening skies mid-month the view towards the West includes the constellations of Gemini and Auriga, but Orion is now getting very low after its long winter showing. In the South, Leo is at its highest. In the North East the bright 'summer' stars Vega and Deneb are rising. The 2 stars appear similar in brightness but that belies the fact that Deneb is an extremely luminous star over 100 times further away than Vega. The light we see now from Deneb set off towards us over 2000 years ago when Britain was still in the Iron Age.

Sky Watcher





Aerial Photography

Barns

Chimneys

Roof Tops

HIGH SIGHT

Historic Buildings Monitoring

Building Inspections

Estate Records

COST EFFECTIVE, SAFE ACCESS, ROOF TOP INSPECTIONS BY DRONE WITH NO NEED FOR SCAFFOLD, TEMPORARY WORK OR STRUCTURES REQUIRED.

NON DISRUPTIVE, FAST AND PROFESSIONAL SERVICE, SAME DAY REPORTS AND RECOMMENDATIONS FOR REPAIRS

FULLY CAA AND CIOB REGISTERED, QUALIFIED AND INSURED SERVICE. CARRIED OUT BY EXPERIENCED SURVEYORS.

Call to discuss your requirements;
 Chris; 07817219133
 Jim; 07966403783
 email; highsightse@gmail.com



**CONNECTED CABS
WITHAM**

01376 317777



Wheelchair Accessible

All fares fixed price (no meters)

Card payments accepted in cars



Prices from Witham:-

Hospitals

Broomfield	£22
Colchester General	£25
Springfield	£18
St Peters/ Braintree	
Community	£15
Maldon	£15

Airports

Stansted	£40
Heathrow all Terminals	£96
Gatwick	£95
London City	£75
Southend	£50
Loton	£95

ANGLIA TREE SERVICES

Specialist tree surgery

Residential & Commercial Customers

CROWN REDUCTION • FELLING • TOPPING

HEDGE TRIMMING • ALL GARDEN WORK

STUMP GRINDING

For a quick, tidy and friendly service call:

Tel: 01621 892831



7 DAYS A WEEK • EMERGENCY SERVICE AVAILABLE • FULLY INSURED



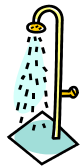
Philip Little

Property Maintenance Magician

Local service at local prices

Knowledgeable and friendly

07973 129808 or 01376 515257



Serving the Local Community for over 125 Years

G. COLLINS & SONS

Funeral Directors Ltd



30 RAYNE ROAD, BRAINTREE, CM7 2QH

01376 342266

4 THE STREET, WHITE NOTLEY, CM8 1RH

01376 583750

WWW.GCSFD.CO.UK

Beautiful Rooms For Rent In Witham & Braintree

We have 4 Lovely houses
2 in Witham—2 in Braintree
With and Without en-suites
£90—£130 per Week

(All inclusive of Rates, Light, Heat, and with Broadband)

See our Website:- www.jbwpartners.co.uk

Or Call

John
07850 161629

Mavis
07714 579783

Michelle
07966 323914

**HELP WITH
FUNERAL ARRANGEMENTS
RICHARDS
FUNERAL SERVICE**



01376 513114

78 Newland Street, Witham, CM8 1AH

From advice on how to register a death to making all the arrangements, we're here 24 hours a day.

Members of the National Association of Funeral Directors
A British Owned Company www.dignityfuneral.co.uk

SpeedyBroadband.co.uk

***Sick Computers my
Speciality***

- Home Networking Problems Sorted Out
- Computer Viruses Removed
- Operating System Upgrades
- Upgrade to Windows 10

**FOR YOUR FREE SURVEY AND
QUOTATION CONTACT**

Peter Hope

peterhope@speedybroadband.co.uk

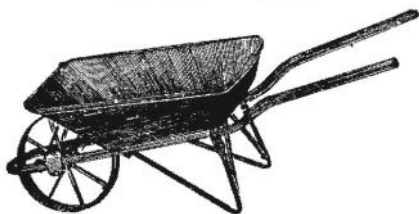
Tel: 01376 502605

Mob: 07904 235101

Website

www.speedybroadband.co.uk

**Ya Garden
Cares**



**Thorough Attention on
Bed Maintenance,
Mowing & Clearance**

**Telephone
Barry: 07732337626**



The New Daffodil Garden in the Churchyard is full of Bulbs this year congratulations to the Churchyard gang for continuing their excellent work. Also Charlie who was nearly 16 years when he was put to sleep on March 15th enjoys watching a Robin in our Garden this was a few summers ago and was I think taken by Clare.



A Heard of Deer found recently on a local walk. And Some Ducks out near Clarks Farm on Snivellers lane





What is it with this Yellow Tit? Who seems to have taken a real interest in this dress he/she even stayed on it into the Wardrobe. Pictures from Rob Fossett.

PAULINE MARSHALL September 1949 - January 2021

Pauline lived in Rivenhall for just over 61 years and attended the Village School and then went to the Alec Hunter Secondary School in Braintree. Her first job after leaving school was with the Midland Bank, Chelmsford. When our children had grown, she worked part-time as a cook at the Conservative Club in Witham.

We met 56 years ago and were happily married for almost 53 years.

Pauline loved village life and was good at organizing community events. She ran the village coffee morning for several years and also assisted me with carpet bowls. She was Booking Secretary for the RPFA (Village Hall) Committee and was involved with their annual Race Night and Santa's Grotto. Pauline loved her Scottish Dancing and was always putting us right when we went wrong.

When we needed someone to collect the subs from members of the Ten Pin Bowling at Maldon where we were 'bowlers', yes you've guessed, it was Pauline who took the job on.

Pauline was happy when she was in her kitchen cooking and baking and won many prizes in village shows.

She loved reading, knitting and doing quizzes.

Pauline was well known in the village and beyond. She had many friends and will be sadly missed by all who knew her.

Mick

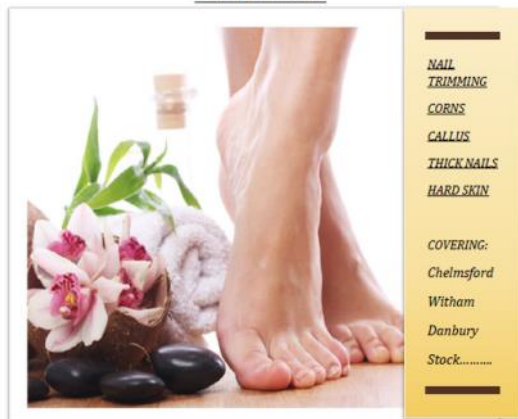


FOOT HEALTH PRACTITIONER



THE SMAE INSTITUTE

HOME VISITS



NAIL
TRIMMING

CORNS

CALLUS

THICK NAILS

HARD SKIN

COVERING:

Chelmsford

Witham

Danbury

Stock.....

JAMES NEWMAN (MCFHP,MAFHP)

TELEPHONE: 01376 519036

MOBILE: 07793971351



Brookend
VETERINARY PRACTICE LTD

62 Braintree Rd Witham

**CARING FOR THE PETS OF WITHAM AND
THE SURROUNDING AREA FOR 25 YEARS**

SPECIAL O.A.P. SURGERY THURSDAYS

CAT ONLY CLINIC WEDNESDAYS

Late night surgery Wednesday till 8pm

Surgery Opening hours
Monday to Saturday for appointments

Tel: 01376 500038

www.brookendvets.co.uk



PC Doctor
Operations Limited

**For all your computer
requirements including:**

Virus prevention, detection & removal
Broadband, Networking, Wireless & Firewall set up
Email & SPAM filtering
Hardware Repairs & Upgrades
Software Faults & Crashes
Backup Solutions & Data Recovery
Software Installation & Removal
Hardware & Software Supplied
Website Management • Computer Training

**Health
Checks
£39.99**

Office: 01621 891064 • Mobile: 07990 565336

Email: support@pcdocops.co.uk

Website: www.pcdocops.co.uk

Monthly subscription service available to provide complete "peace of mind" and allow you to spread the cost of your IT requirements.

Please contact for further information.

REYNOLDS

CARPENTRY SERVICES

**For all Carpentry, Joinery
& Cabinet Making Requirements**

CSCS Registered

30 Years Experience

4 Years Apprenticeship

City & Guilds and

Advanced City & Guilds Qualified

Free estimates – No obligation

All building work considered

Can also make items to order

also

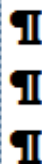
**'curtain poles, tiling, flat packs,
kitchens, doors, sheds etc, no jobs
too small'**

Contact

07889 110962

Answer phone at other times

Jeremy Larke Television services



Telephone: 01376 513645

Mobile: 07947 601619

Email: telerepair@aol.com

All Television Systems Catered
for Freesat, Freeview, Sky.

- Installations & Repairs To all makes and models
- Full Plasma & LCD Fitting Service
- Wall Mount Brackets Supplied and Fitted
- Aerial & Satellite Dishes Fitted
- Freeview, Freesat & European Channels
- View and Control Your Sky in Other Rooms
- Aerial and Telephone Extension Points Installed



Don't Delay Call Today

Janet C Davies

Dip. F.D. M.B.I.F.D

**BRAINTREE & KELEVEDON'S LADY FUNERAL
DIRECTOR**

Offering a full and Comprehensive Funeral Service

Telephone 01376 339300

For a Personal and Caring 24 hour service

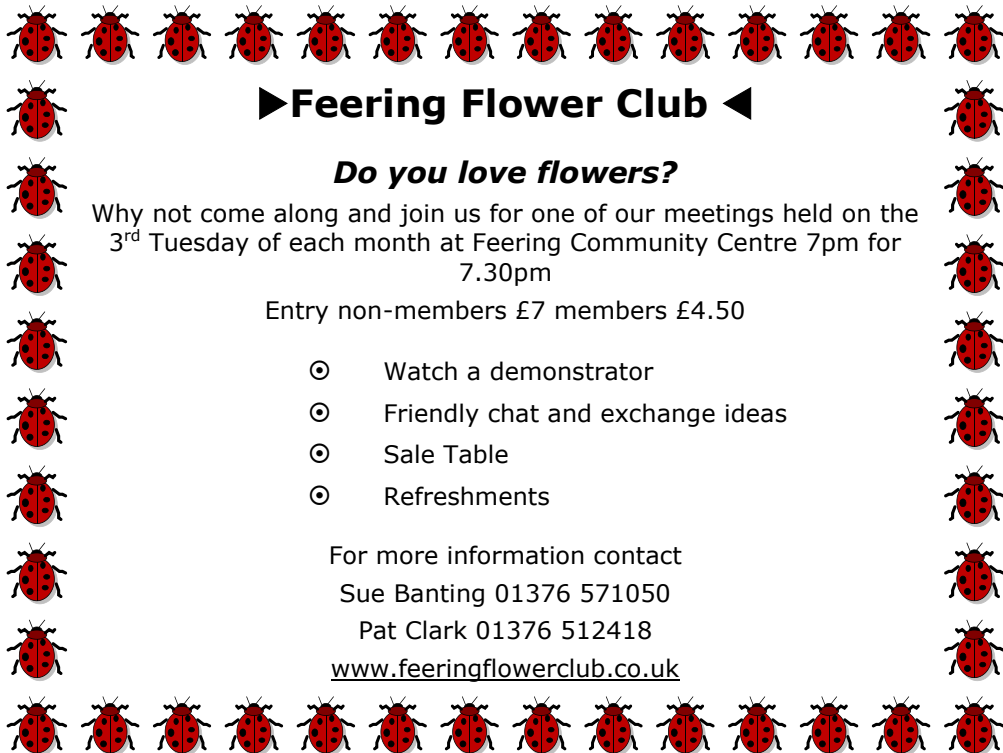
Local Chapel of Rest at Fern House 72 Coggeshall Road Braintree and
Victoria House, Trews Gardens, Kelvedon

Funerals are arranged and carried out in the Traditional Manner but
With 'The Gentle Touch'

Pre payment Plans available—Floral Tributes arranges—Woodland Burials
Bereavement Care—Low Cost Simplicity Funerals - Memorials—Printing
Catering—DWP Funerals

Part of the Hunnaball Family Group

Members of the National Association of Funeral Directors



►Feering Flower Club ◀

Do you love flowers?

Why not come along and join us for one of our meetings held on the 3rd Tuesday of each month at Feering Community Centre 7pm for 7.30pm

Entry non-members £7 members £4.50

- ⊙ Watch a demonstrator
- ⊙ Friendly chat and exchange ideas
- ⊙ Sale Table
- ⊙ Refreshments

For more information contact

Sue Banting 01376 571050

Pat Clark 01376 512418

www.feeringflowerclub.co.uk

DANIEL ROBINSON & SONS

Incorporating
W C BROWN & SONS

Independent Family Funeral Directors & Monumental Masons

A professional, caring, 24 hour service

Private Chapel of Rest

Fleet of air conditioned limousines

Horse drawn funerals available

Traditional and contemporary funeral services to suit your wishes

Funeral pre-payment plans

Arrangements may be made in the comfort of your own home, if preferred

Haslers Lane
Great Dunmow
Tel: (01371) 874518

7 Manor Street
Braintree
Tel: (01376) 320582

31 High Street
Halstead
Tel: (01787) 475533

www.drobinson.co.uk

Turning the pages of History

Research by Tracy Scott

This month I thought we would look into the goings on in the month of April through the years connected to Silver End only. I will start with 1884 with a Freehold Cottage Residence with a large garden in Silver End. This was in the occupation of George Challis with an annual rental of £4.15s.

There is many advertisements around this time of the 1800's by King Seeds which grew in and around the area and this we will looking into another time...but now we move into 1926 and the start of what made Silver End as we know it today.

The start on the foundations by a gang of men for the new factory of Messrs. Crittalls. The firm has also made a start on building houses at Witham with having an extension on their factory there.

With the Auspices of Rivenhall Parochial Church Council, Silver End enjoyed a splendid concert at the Village Hall by the Maldon and Heybridge Male Voice Choir in 1932. During the performance were also two amusing sketches, arranged by Mrs. Fitzgerald.

The choir were conducted by Mr. Gilbert and Miss Pyke was the accompanist. The arrangements were made by Mr. C. A. Pasfield and Mr. W. Bedford. Bishop Steward expressed a hearty thanks at the end of the performance.

Silver End Co-optative Society in April 1937 was broken into by thieves, but only got away with under £3. The store had a railway system of cash collection in operation which meant most of the tills were not used.

The Post Office which is within the store was also broken into and had about 30/- in cash taken. And a small collection of silver was taken from the Fish dept., which amounted of about 10/-. This coinage would have been used as Carmen's cash change.

In 1938 Miss Magdalen Horridge the only daughter of Mr & Mrs J. D. Horridge of Silver End married Mr. W. Goldworthy of

Pontridd at Witham Catholic Church. The Rev. Miles O'Riley officiating.

The bride wore a gown of gold cloth with gold embroidered veil and coronet. Magdalen carried a sheaf of daffodils and narcissi. Her bridesmaid was her cousin Miss Aileen Marchant and Mr. C. Goodwin was the best man.

There were over 70 presents given to the happy couple including an inscribed Oak Chiming Clock from the staff of the Silver End Press where the bride has been employed.

Moving into wartime 1943 Silver End's W.I. meeting was presided by Mrs Oliver. Mrs Fitzgerald and her daughters Ethme and Evangeline and Miss Joan Geere entertained.

During the meeting all were informed that 26 parcels had been given to local War Prisoners in the last 3 months. Mrs W. J. Cheek won the competition for a potato dish.

A cable had been received from Pensacola, Florida in April 1944 informing that George Cathcart has Won his Wings where George had been training and announcing that Midshipman George Cathcart R.N.V.R. Fleet Air Arm. He passed his exams and been commissioned as a Flying Officer.

He was 19 years old and the son of Mrs and the late Mr Reginal Cathcart of Valentine Way in Silver End. He was educated at Colchester Technical School and before he volunteered worked in the tool-making dept., at Crittall, Silver End branch.

Going forward to 1973 we find that the Lych-Gate having to be repaired. Browns of Cressing will be repairing the Lych-Gate after the structure supports had rotted over the years and resent damage made by a double-decker bus.

And lastly for this month from the 1975 magazine our then Rector David Nash inform us that £25 had been collected towards the project of a Notice Board for St. Frances 'without this people are hardly likely to realise that it is a church'.

RIVENHALL SCARECROW COMPETITION

Please do consider taking part in this year's Rivenhall Scarecrow Competition which will run from Saturday 19 June through to Sunday 27 June.

The cost of entry per household is £10, and this is to raise funds for the Rivenhall Millennium Committee's annual charitable works.

From early May, entry forms will be available from:-

Bob Turner, 21 Church Road, Rivenhall (01376 - 513659)

Rivenhall Stores, Church Road, Rivenhall

John Macrae, Whitelands, London Road, Rivenhall End (01376 - 514930)

Carole McCarthey, 17 Foxmead, Rivenhall End (01376 - 512781)

Completed forms with £10 -must be returned to either Bob Turner or Carole McCarthey.

Your scarecrow will need to be visible from a road, a pavement or a public space.

Prizes will be announced and awarded on Sunday 27 June. Further details will be announced in the May and June End to End magazines and on the Rivenhall Community Facebook page.

Get your thinking-caps on! Let's have some lively imagination and a splash of colour with a good serving of humour. Our community deserves this after a drab twelve months or Covid19 restrictions.

Thank you,

(The Rivenhall Millennium Committee)

Information from Esses Police

Action Fraud warning as holiday bookings surge after lockdown exit plans announced.

Action Fraud and ABTA, The Travel Association, are reminding the public to think twice before handing over their money and personal information when booking holidays this year.

What is holiday fraud?

Holiday fraud can vary from fake accommodation listings that don't actually exist, to "too good to be true" offers with flights

being particularly targeted. Criminals can approach you over the phone, via text, email and social media, offering incredibly cheap deals to tempt you into booking a holiday with them. In reality, the holiday you've booked, or parts of it, doesn't exist at all.

Before you buy:

- **Do your research**—make sure you've read plenty of reviews and have checked that the company is an ABTA member
- **Pay Safe**—use a credit card where possible and avoid paying into bank accounts
- **If it's too good to be true, it usually is!**

Car Theft Gang Arrested

Detectives investigating a gang of thieves who used scanners to steal at least 70 keyless cars and 4x4s have arrested nine people.

Police raided 10 homes across London, Essex and Hertfordshire in the early hours of Wednesday and arrested six men and three women.

The operation was a move against a network which investigators believe is behind the theft of at least 70 high-value vehicles worth more than £1.5 million in total, most being Range Rovers.

It is claimed that the gang used scanners to copy the signal from the owners' keyless fobs as the luxury vehicles were parked in driveways.

The thieves then fitted false plates to the cars or otherwise changed their identity before selling them on.

Det Con Tom Jenkins said: "For many months, we have been working tirelessly behind the scenes to build evidence against the Organised Crime Group we believe to be responsible for the theft and fraudulent resale of at least 70 high-value vehicles to enable us to make our arrests.

"I hope this shows the community that we take this crime type very seriously, and we will do everything in our power to bring those responsible to justice.

"I'd remind people with electronic car keys to keep them away from doors and in a signal blocking pouch when not in use to prevent thieves scanning it to open and steal your car nearby."

He also warned car buyers to check documents before committing to a sale.

"If you buy a stolen car, not only would it result in you losing your money and having no car, but you could be arrested for handling stolen goods," Mr Jenkins said.

"When buying a vehicle, always check the DVLA V5 document and make sure the Vehicle Identification Number on the vehicle is the same as on the document."

The theft of catalytic converters continues across the county. The Honda Jazz and CRV along with other Japanese models continue to prove popular although thieves are also looking at many other types while metal prices remain high. Vehicles are particularly vulnerable in public car parks such as those at shopping centres and hospitals. A "cat" can be removed from most popular vehicles in 60 seconds or less.

Some recommendations to reduce the risk are as follows.

Recommendations 1-3 apply particularly to business premises and recommendations 3-7 apply to all motorists:

1) Fencing Around Vehicles

Parking within a secure fenced and gated compound acts as a deterrent to opportunist catalytic converter thieves.

2) Defensive Parking

If you have a fleet of vehicles, parking vehicles close together and close to walls will help to prevent easy access underneath the vehicles.

3) Effective Security Lighting

Good security lighting makes vehicles visible to the street without creating glare and can act to deter the thief. Remember that lighting is only effective if the area is overlooked, otherwise it acts as an aid to the criminal.

4) Garages

Where possible park in your garage and secure it.

5) Welded Bolts

If your catalytic converter is 'bolt-on' you can have the bolts welded shut but this is only a major deterrent where the thief is working with a wrench, not a cutter.

6) ID Etching

You could have your converter professionally marked with a serial number. This will provide police with evidence of the owner should it be stolen and later recovered. The problem with this one is that if the cat is marked, thieves can often open it up easily and remove the precious metals into a container, leaving the shell of the cat behind with your vehicle.

7) Consider a protective cage for the catalytic converter - contact your car dealer.

Please see the Essex Police guidelines on protecting your vehicle in the link below -

<https://www.essex.police.uk/cp/crime-prevention/theft-from-a-vehicle/vehicle-safe-and-sound/>

End to End Nature Care.

As is, no doubt, mentioned elsewhere in this edition of the magazine, the proposals for the future of the A12 are shortly up for "public consultation". It could be argued that all such projects should be suspended until the full consequences of the Covid-19 pandemic, both economic and in terms of whether the previous level of use and demand will return, can be realised. It seems, however, that it remains full steam ahead for this project regardless.

Putting aside the philosophical arguments of the merits of "economic growth" and reliance on the continued construction of infrastructure to support the economy, it is possible for those who value the environment to clutch positives from such situations, albeit somewhat idealistically. Looking specifically at the proposed new dual-carriageway it will presumably be designed and constructed with wide verges. Sympathetic design and management of those verges could

be hugely beneficial for wildlife. Unfortunately in many such developments there still seems to be an almost reflex implementation of the “twigs and tubes” strategy of planting thousands of bare-root young trees (often called “whips”) and surrounding them in an ugly and seemingly indestructible tubular shield. Even if the tree species used are native the whips are often sourced from overseas and have been known to be a vector of plant pests and diseases which have then spread to the existing tree population.

The shields, or guards, are generally specified to protect the whips against damage from herbivores, including deer, rabbits and even rodents. Often they are made from recycled materials and sometimes claim to be biodegradable (usually this means they are made of plastic which breaks down over time due to the ultraviolet component of sunlight) although many will have seen trees planted several years previously still bursting out of a tubular guard which may be well over a decade old. Ironically, at the same time as these guards are being marketed as essential for the survival of planted trees, in places such as Tiptree Heath groups of volunteers spend considerable time cutting down and pulling up young trees (which thrive despite the lack of a tubular guard) in an effort to prevent them shading out the heathland flora, particularly the heather itself. Almost any area of bare land, if left for a period of time, will pass through stages of vegetation cover, gradually increasing in height and density until ultimately it becomes woodland. The process is termed natural succession and results in a flora, with associated fauna, of species evolved to survive optimally in the conditions present.

So why not just leave the verges to fend for themselves? Local seeds will soon be blown or carried in and in almost no time at all local wild flowers and shrubs will be thriving. Without the necessity for any unsightly tubes, trees will soon begin to show through the overgrowth (again from local seeds brought in entirely naturally, with no human intervention) and with a minimum of management the road verge can become an attractive haven for nature.

One problem is the perception of some people that an area left to grow wild is “untidy”. This way of thinking really has to be reversed if nature is to have any future in the UK. The same people who drive past an unmown road verge and think it untidy may travel miles to holiday somewhere “unspoilt” where nature has yet to be ravaged by development. It has to be realised that nature can also thrive alongside us in our urban and suburban areas if we are prepared to let it. As part of this, with time and understanding our road verges, small and large, could become an enormous natural network of beautiful biodiversity.

A connected issue to the perception of “uncut = untidy” is the problem of litter. In places the existing A12 verges are quite nicely vegetated and provide a home for a variety of animals; for example, dormice are known to inhabit local verges. Undeniably though, in places litter is a significant issue and hugely unsightly. Again it is about perception; if the verges are allowed to grow wild and then recognised, managed and promoted as havens for wildlife, there could be growing impetus for the public to value and respect them far more highly. Until that time the danger is they will remain unvalued, unappreciated and hence mistreated.

Our group activities remain suspended due to the pandemic, though hopefully we will be able to enjoy some fieldwork before the summer is out. In the meantime, why not keep your eyes and ears open when taking your exercise along some of the local roadside pavements to see just how much wildlife there is. Spring is such a rich time to do so, with so many plants, insects and birds active. If you see any plant or animal which you find interesting or would like to find out more about, do let us know. You can contact me via simon@e2e.silverend.org or on 07947 388180, or please join and post on our “End to End Nature Care” Facebook group <https://www.facebook.com/groups/767416983842784>.

Simon Taylor

Organisations in Rivenhall

Clerk to Parish Council	Keith Taylor	516975
Email parishclerk@rivenhallparishcouncil.net	meets every first Tuesday	
End to End Nature Care	Simon Taylor	01621 810141
Gardening Club	Carole McCarthy	512781
Meets on 2nd Tuesday at 7.30pm in Village Hall		
Carpet Bowls	Mick Marshall	512836
Meets every Thursday at 7.30pm in Village Hall		
Playing Fields Association	Mick Marshall	01376 512836
Spread Your Wings Dance Acam	Laura Pearson	01376 741317

Facilities

Hire of Village Hall	Pauline Marshall	01376 512836
Or email rivenhallvillagehall@gmail.com		
Hire of Henry Dixon Hall	Tracy Scott	571551
Mobile Library 13 April 4 May	Beech Road	9.20 to 9.50. a.m.
Oak Store Rivenhall "Open All Hour" Tel AJ		01376 538838

Organisations in Silver End

Clerk to Parish Council	Mrs B. M. Temple	618464
Email parishclerk@silverendparishcouncil.gov.uk		
Bowls Club	Paul Mann	07551 006906
Children's Centre	Faye Savage	587960
Neighbourhood Police	Braintree Policing Dial	101
Congregational Church	Sharon Gray	583913
Friendship Club	Maureen Green	585275
Silver End Gad Abouts	Denise Sullens Smith	07952 992782
Gardening Club	Liz Woor	585586
Guiding Group	Carol Hutchings	07857 663959
Neighbourhood Watch	Judy Hill	07896 975839
Scouting Group	Denise Sullens Smith	07952 992782
St Mary's Church (R.C.)	Vivian Phillips	583598
Tennis Club	Jason Cairns	584581
Workers Educational Assoc.	Brian Gillion	583706
Luncheon Club	Helen Thomson	583255
Doctors Surgery		583387
Silver End Heritage Society	Jackie Nesbitt	07707 084608
Silver End United Football Club	Mark Edgell	584639 Web
Site www.silverendunitedfc.co.uk		
Women's Institute	Brenda Warnes	07931 548193
Community Warden	Jackie Windard	07785 515526
Post Office in Co-op - please note that it closes at Lunchtime 1-2pm		
Closes 1 pm Wednesday and 12.30 pm Saturday		
Library: Tues & Thurs - 2pm to 6pm Saturday 9am to 1pm		

HUNNABALL

Family Funeral Services



Here **whenever** you need us

Funerals | Memorials | Pre-paid Funeral Plans

Hunnaball of Witham

1 Coach House Way, Newland Street, Witham CM8 1YJ

01376 511592

www.hunnaball.co.uk

JANET C DAVIES

Lady Funeral Directors



**Our Ladies
in Hats**

*"funerals with
a gentle touch"*

Funerals | Memorials
Pre-paid Funeral Plans

Janet C Davies of Kelvedon

233 High Street, Kelvedon CO5 9JD

01376 573691

www.hunnaball.co.uk

DRH LANDSCAPES

Est. 1987

Quality Comes 1st

**Garden Landscape and Design – Hard Landscaping – Soft Landscaping
Grounds Maintenance for Private and Commercial Premises**

- Are you planning to redesign and landscape your garden?
- Does your garden just need a little TLC or a complete makeover?
- Are you looking for assistance with regular garden maintenance or perhaps a one-off visit to get things back in order?
- Is your lawn looking tired? Would you like a new replacement lawn or artificial lawn instead?

We are a family run business with over 30 years of experience working in the ever changing world of landscape management, business regulations and horticulture, with full public and employer liability insurance, as well as being a fully registered waste carrier with the Environmental Agency.



OFFICE: 01376 514142

We welcome...



EMAIL: info@drhlandscapes.com

www.drhlandscapes.com

Harcog Centre, 77-83 Maldon Road, Witham, Essex CM8 1HP

